

PRINT SETTINGS

- Image Mode: Not mirrored
- Paper system: Multi-Purpose-Tray, Heavy Paper or similar

TRANSFER PROCESS FOR PICTURES

- Print your design on the transfer media and cut away all non-transferable areas.
- Peel off the backing paper and position the printed transfer foil onto the t-shirt.
- Cover the design with one sheet of silicone paper (Glossy Finish or Matt Finish Economy) and 10 sheets of normal paper.
- Press together using the settings below.
- Remove the 10 sheets of normal paper. When it cooled down completely, remove the silicone paper. This avoids that the toner sticks on the silicone paper.
- Cover the t-shirt with a silicone paper sheet and press again for 40 seconds.
- Rub the silicone paper with a cloth, until the toner cools down completely, before you remove it. This prevents the toner from sticking to the silicone paper.

TRANSFER PROCESS FOR CUTTER/PLOTTER DESIGNS:

- Print your design with corner marks on the transfer media. Use the corner marks to cut the design with a plotter which is using an optical eye.
- Weed all the non-transferrable areas and rub an application tape on top of the weeded design.
- Separate the application tape from the backing paper.
- Position the application tape with your design on onto the t-shirt.
- Cover it with 10 sheets of normal paper.
- Press together using the settings below.
- Leave to cool down completely before removing the application tape.
- Cover the t-shirt with a silicone paper sheet and press again for 40 Seconds.
- Rub the silicone paper with a cloth, until the toner cools down completely, before you remove it. This prevents the toner from sticking to the silicone paper.

DRYING

- Do not tumble dry! Hang dry or line dry is recommended.

WASHING

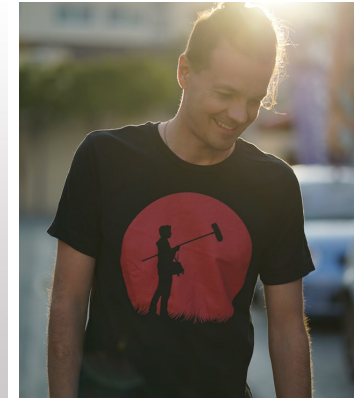
- Up to 40°C (cold wash cycle). Inside out. Do not use fabric softener or liquid detergent.

IRONING

- When ironing cover the print with baking paper.

TRANSFER SETTINGS

	AUTOMATIC HEAT PRESS	MANUAL HEAT PRESS
PRESSURE	5 bar/72 PSI	Maximum
TEMPERATURE	200°C/392°F	200°C/392°F
TIME	10-15 sec.	10-15 sec.
FIX	40 sec.	40 sec.



IMPORTANT!

- Please carry out a transfer and wash test with all materials before mass production.
- T-Shirts for a double-sided print (frontside & backside), has to be put over the lower heat plate. In this case only one side will be treated with heat and you avoid that the applicative design from the other side will be pressed out again.
- If your T-Shirt is yellowing, lay a piece of fleece onto it during the transfer process.

Call one of our friendly sales reps or visit our Durban or Jo'burg offices today for more information.



087 056 3231



www.sytech.co.za



info@sytech.co.za



[linkedin.com/company/sytech-supplies](https://www.linkedin.com/company/sytech-supplies)



[facebook.com/Sytech.Supplies](https://www.facebook.com/Sytech.Supplies)



[instagram.com/sytechsupplies](https://www.instagram.com/sytechsupplies)



FOREVER[®]

DIGITAL TRANSFER APPLICATIONS TECHNOLOGY



Transfer Instructions for FOREVER
LASER DARK for Dark and colored cotton